



W  N D E R D A L

EDUTAINMENT CENTRE

School Visit Logistics

WONDERDAL IS A MAGICAL, IMMERSIVE AND CURRICULUM-ALIGNED LEARNING EXPERIENCE TAILORED TO LEARNERS FROM GRADES R TO 7.

We can accommodate **three classes** of a **maximum of 30 learners** per class per visit, with the adventure lasting approximately **three hours**. The school programme is available on weekdays during school terms (excluding public holidays).

BEFORE VISITING WONDERDAL

1 MAKE A BOOKING

To book a school group, please contact us via email at schools@wonderdal.co.za or call 021 205 5624.

2 MAKE PAYMENT

Full payment needs to be made two weeks prior to arrival. If you pay using the EFT option, please use your invoice number as a reference and send proof of payment to schools@wonderdal.co.za. Tickets will be issued to you on arrival.



Bank account details:	
NAME OF ACCOUNT:	Wonderdal SA (Pty) Ltd
BANK:	ABSA
ACCOUNT NUMBER:	409 612 3527
BRANCH NAME:	Stellenbosch South Africa
BRANCH CODE:	632005
SWIFT CODE:	ABSAZAJJ

Price for school groups

The entry fee is **R95** VAT inclusive per learner. The price includes a pair of special socks to wear in Wonderdal. School group prices apply to online and on-site ticket purchases and to South African schools only. Teachers and chaperones accompanying the group gain free entry for a maximum of one teacher for every 10 learners.

Cancellation Policy

You can cancel your booking four weeks prior to your session with a full refund. If you cancel your booking between two and four weeks prior to your session, 50% of the price will be refunded. You will also be given the option to reschedule the session. You cannot cancel or reschedule your booking within two weeks of the session. If you miss your session, you will not be refunded.

3 SPECIAL NEEDS AND OTHER QUERIES

We make every effort to include learners with special educational or medical needs. Please discuss special requirements with us when you make your booking. For any queries please mail schools@wonderdal.co.za or call 021 205 5624. Our office hours are:

Monday	Closed
Tuesday-Thursday	09:00-17:00 (open until 19:00 during school holidays)
Friday-Saturday	09:00-19:00
Sunday	09:00-17:00

a. Prepare for the learning experience

Download our Pre-Visit Teacher Pack to familiarise yourself with the learning experience, curriculum connections and pre-designed classroom lessons we offer schools. There are different packs for Foundation Phase, Intermediate Phase and Grade 7s.

b. Chaperones

Trained Wonderdal staff members are present in the venue to help make your visit a memorable experience. We do require that each group arrive with their own teachers and chaperones to manage the group. We require one responsible adult per 10 learners.

Please note there is no charge for teachers and chaperones accompanying small groups. We will allow free admission for up to one adult teacher or chaperone per 10 children.

Teachers and chaperones help shape the learning experience during the visit. Please fill chaperones in on relevant logistical information captured in this document and learning information captured in the relevant Pre-Visit Teacher Pack.

c. What to wear and bring

The Wonderdal Experience includes physical activities such as climbing and crawling, so make sure learners wear suitable, comfortable clothes and bring hats and sunscreen for the outside area.

d. Prepare learners

Before you visit you can prepare learners for the experience of a new magical world by facilitating a class or small group conversation the day before or even on the bus on your way to us. Here are a couple of question prompts you can use:

- ▶ What are the most important things in our world?
- ▶ How many different kinds of energy are you familiar with?
- ▶ What are the sources of energy used by your body?

You can also prompt a conversation on related Natural Sciences and Technology and/or Life Skills topics that you are covering in class at the time of your visit. Good matches include: Energy, What Plants Need to Grow and Healthy Eating.

DURING YOUR WONDERDAL VISIT


YOUR ITINERARY

Arrival and check-in	15-20 minutes per class
Edutainment experience	90-120 minutes
Classroom experience	30 minutes
Lunch (not included)	20-30 minutes

A staff member will meet your group at reception. Please follow their instructions as they take you through the registration process. Wonderdal is a no-shoe-zone, and visitors are required to wear special socks that will be issued to the group before admission. All shoes will be safely stored in individual lockers in the reception area. Restrooms are also located in the reception area. Teachers will be provided with an On-site Teacher Pack and venue map on arrival.

b. The edutainment experience

Wonderdal is a world of wonder and discovery, home of Kora, the Tree of Light, and the magical Amuki.

For the first two hours of your visit each of your learners will have their very own virtual learning companion. Together they will grow strange plants, collect Ki Crystals bearing ancient glyphs, play energy games, climb Kora's branches, chill in story caves and more. Experience the fantastical Wonderdal with them during this period of free-play and exploration.

We prioritise health and safety and conduct daily checks. Any hazards found are dealt with immediately. Adults are responsible for the health and safety of their group and should stay with their group at all times.

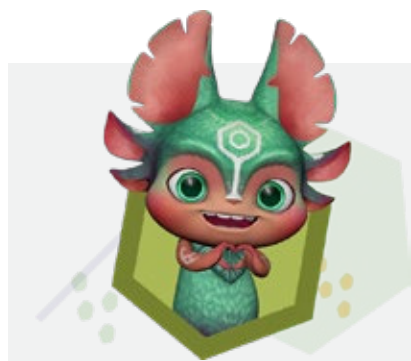
c. The classroom experience

Wonderdal offers the use of an on-site classroom to help your learners reflect on their Wonderdal learning experience. This bit of extra time also gives you an opportunity to make those all-important connections with the curriculum. We have prepared lesson plans for you to use in the on-site classroom. You are also welcome to come prepared with your own. Lesson plans cover CAPS aligned topics in Natural Sciences and Technology and Life Skills on Plants, Nutrition and Energy. If you want to prepare in advance you can find these lessons in our [On-Site Packs](#) for teachers. A lesson could last approximately 30 minutes and follow the structure of getting learners to talk about the specific themes in Wonderdal and connect those themes to the real world.

Lesson plans and needed resources are provided on-site when you arrive. Foundation Phase teachers can, as an alternative to the classroom experience, use our outside play area as an obstacle course for Life Skills: Physical Education.

d. Lunch details

No food is allowed inside Wonderdal. There are designated indoor and outdoor sitting areas where learners can enjoy their own packed lunch. Drinks, snacks and food can also be purchased at the Babushka Deli or the Wonderdal Food Truck next door to Wonderdal.



FEEDBACK

We aim to make Wonderdal the experience of a lifetime for teachers and learners. To help us please complete the feedback form after your visit or write a review on Google, TripAdvisor and Facebook.